

Advanced Environmental Instrumentation

Harnessing Leading-Edge Sensor and Mobile Computing Technology



✓ Surveyed

✓ Documented

✓ Reported



ADVANCEDSENSE[®] AIR DIRECTSENSE[®] AIR

Air Velocity Meters

Live (AdvancedSense)

File	Log	Probe	View
Air Speed		208 ft/m	
Temperature		68 °F	
Volume Flow		1021 cfm	

Example Screens

Min/Max/Avg

Parameter	Average	Min
Air Speed m/s	0.38	0.22
Temperature °C	20	20
Volume Flow m3/h	327.5	188
ΔP Pa	-3.5	-4.1

Live (Tablet)



Audio Note

▲ Attach Audio, Text and other notes in the field

The AdvancedSense AIR and DirectSense AIR integrate precision thermal “hotwire” anemometer sensor technology and GrayWolf’s comprehensive software with the power and performance of mobile PC computing. Intuitive and Easy-To-Use. Airspeed measurement has evolved to an advanced new level.

- Measures Air Velocity, Volume Flow & °C /°F (with options for more parameters)
- Patented telescoping hotwire probe design eliminates internal cabling, avoids cable kinking and chafing
- Large, tactile color display of measurements (alternatively display a graph)
- Versatile Averaging function
- **Best-of-Class Accuracy**
- Optional fumehood face velocity and duct traverse calculation software
- Stores measurements along with date, time, text, audio, drawings and more
- Optional 90 degree articulating probe
- Graduated markings (cm & inches)
- Optional auto-zeroing Differential Pressure & pitot tubes (AdvancedSense only)
- Extremely Easy-To-Use



UK & Ireland Distributor

Kingfisher Business Park, London Road, Stroud, Gloucestershire, GL5 2BY, UK

Tel: +44 (0) 1453 733200

sales@et.co.uk

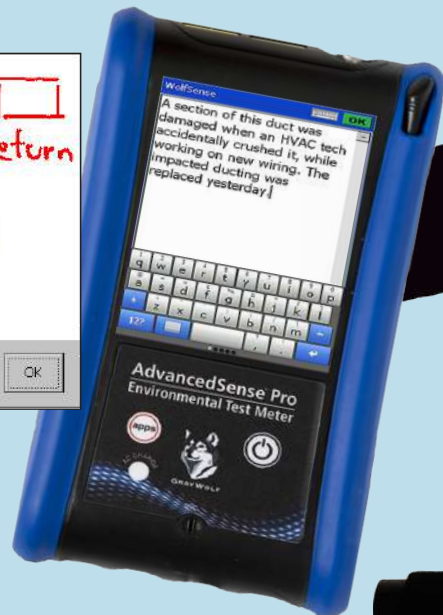
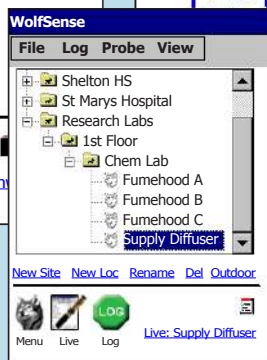
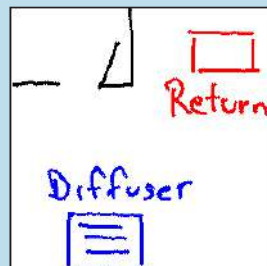
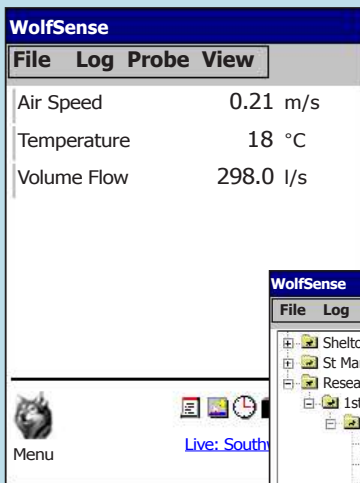
www.et.co.uk

Superior Technology for Enhanced Airspeed Testing

Connect probes to your choice of Platforms

Example Screens (AdvancedSense)

AdvancedSense BE Rugged, Multifunction Data-logger



Air Velocity and Volume Flow readings are displayed on the color tactile screen. An average can be simultaneously displayed; calculated from a choice of manually input readings or measurements auto-updated at one-second intervals.

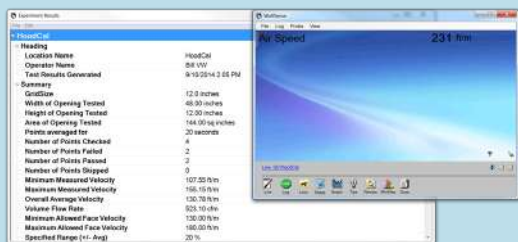
“Snapshot” measurements can be logged at the push of a button or a tap of the screen. Enter a description of the measurement location plus text notes, Word field forms, graphic files, audio memos, statistics, calibration data and more. Save time, improve efficiency and enhance documentation.

DuctCal®



GrayWolf's DuctCal software add-on module for accurate Volume Flow measurement calculates and displays measurement points, walking the user through a choice of Log-Tchebycheff or Equal Area duct traverses.

Example Windows PC Screen (fumehood report and real time air velocity window)

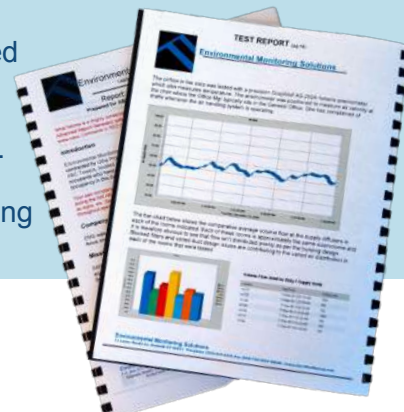


Low cost WIN 10 Tablets are available from GrayWolf, with application appropriate accessories



Or connect probes to your own Windows PC

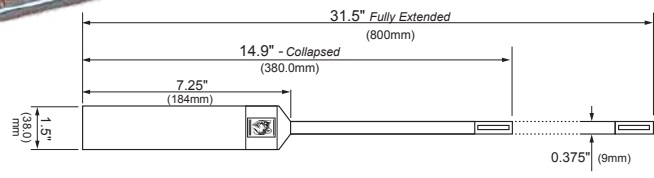
The DirectSense AIR is supplied with WolfSense® PC software for desktop data transfer, analysis and graph generation. Optional WolfSense ARG software automates the reporting process.



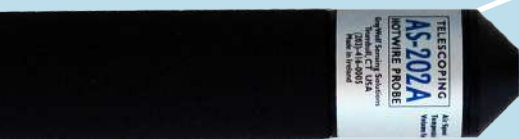
AIR VELOCITY VOLUME FLOW



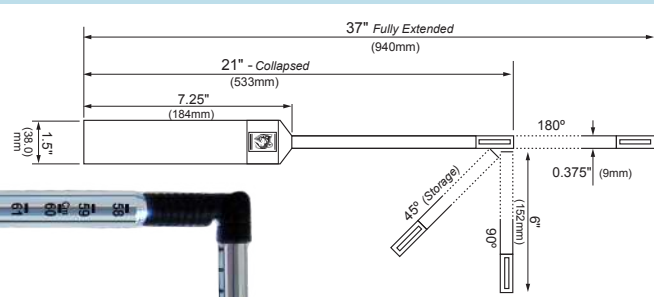
AS-201



The AS-201 and AS-202A hotwire anemometer probes measure air velocity over a wide range, yet have exceptional low velocity accuracy and repeatability. Both probes telescope, while the AS-202A also has an articulating tip (excellent for reaching ceiling diffusers/filters and for fumehood face velocity balancing). The probes are ideally suited for applications ranging from IAQ (thermal comfort), to cleanrooms, to general HVAC testing.

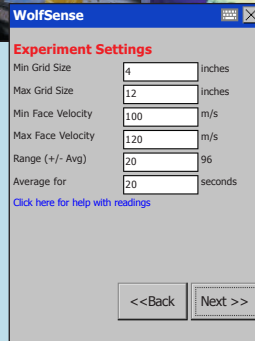
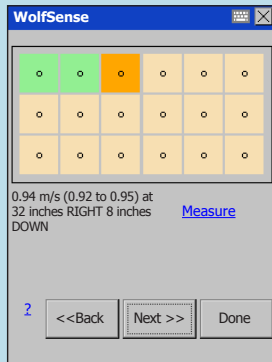
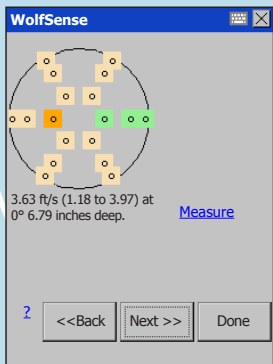


AS-202A



HoodCal®

Fumehood face velocity software guides the user step-by-step from air velocity sensor positioning on through to a detailed report that prints each measurement point and PASS/FAILs the test based on user selected criteria.



PIT-504

Unique Pitot Tube with screw-in extensions 13" (33cm) up to 55" (140cm) standard, or up to 81" (205cm) with optional extensions



TC-3011/305S

K-type °F/°C probes for immersion/surface & other apps

DirectSense II

%RH, Carbon Dioxide, TVOCs, CO, °F/°C and more (O₃, NH₃, NO₂, NO, H₂S or others). Up to 8 sensors in one probe (for IAQ and toxic gas applications).

PC-3016A

6-Channel Particulate Meter



Expand your measurement capabilities with additional parameters available from GrayWolf; and more are on their way!



ADVANCEDSENSE[®] DIRECTSENSE[®] AIR

Air Velocity Meter

SPECIFICATIONS: AS-201/AS-202A

Air Velocity (hotwire): Range: 0–6,000 ft/min (0.00–30.00 m/s)

Accuracy: ±2% of reading or ±3 ft/min (0.015 m/s), whichever is greater

Temperature: Range: 15° to 160°F (-10° to +70°C)
Accuracy: ±2°F (1.1°C)

Stated temperature accuracy is in a minimum 50 ft/min (0.25 m/s) airflow.
This probe has significantly reduced temperature accuracy in still air due to heat generated by the "hotwire".

Probe Dimensions AS-201: 31.5" (800mm) L extended
14.9" (380mm) L collapsed
0.375" (9mm) diam. tip, 0.4375" (11mm) telescope base
1.5" (38mm) diameter handle, 7.25" (185mm) L

Probe Dimensions AS-202A: 37" (940mm) L extended
21" (530mm) L collapsed
6" (150mm) L tip articulates to 180°, 90°, or 45°
0.375" (9mm) diam. tip, 0.4375" (11mm) telescope base
1.5" (38mm) diameter handle, 7.25" (185mm) L

Weight (probe): w/batteries 13 oz (375 gm)

Power (probe): 2 x AA cells; typical battery life 50 hrs.

Probes may be powered by the AdvancedSense or Tablet, bypassing internal batteries.

PC Software Requirements: Windows 7/8/10
30MB hard disc (min.) space

GRAYWOLF SOFTWARE IS 21 CFR PART11 COMPLIANT
SPECIFICATIONS ARE SUBJECT TO CHANGE WITHOUT FURTHER NOTICE

- The DirectSense AIR TAB is a complete kit that includes an **MN-10** 10" tablet computer, AS-201 airspeed probe, WolfSense LAP application software, WolfSense PC data transfer/reporting software, PCC-MN-10 tablet pouch, PCC-22AS hardshell case and more.

The AdvancedSense BE AIR Kit is the same as above, but includes an **AdvancedSense BE** meter, in place of the Tablet PC, and a **PCC-AS01** meter pouch in place of the **PCC-MN-10**.

- Alternative kits (with or without Mobile PC or AdvancedSense) can be ordered to meet your specific needs. Contact GrayWolf for details.
- All factory calibrations are performed with NIST traceable equipment. Certificates of traceability are available.

✔ Measure Smart

✔ Report Efficiently

PCC-22AS Hard-shell carrying case for AdvancedSense or Tablet PCs



PIT-229MS standard pitot tube (operates w/optional **DP-702LH ΔP** sensor in AdvancedSense)

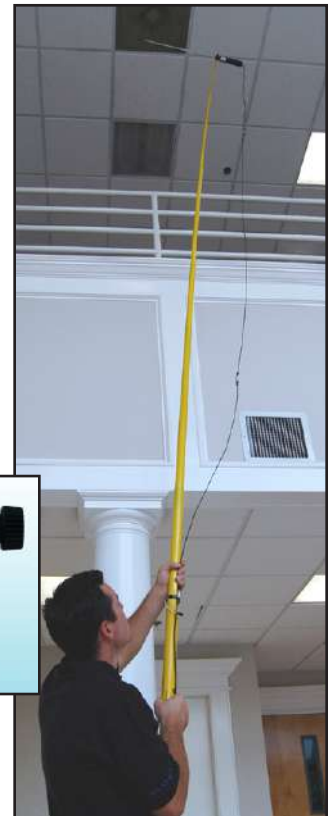


AS-202A on **ACC-TPD1** tripod with **ACC-TPD-AS** fitting



ACC-TPD-AS ▲

AS-201 on **ACC-XT-ROD** extension rod, **ACC-EX4-L8** 4m (14 ft) extension cable and **ACC-TPD-AS** fitting



▲ **PCC-AS01** pouch for AdvancedSense (comes w/belt loop and neck strap)



▲ Protective nylon pouch with hand strap for secure grasp of Tablet PCs. Also includes neck strap and built-in stand. Specify **PCC-MN-8** (8") or **PCC-MN-10** (10") tablet versions.

UK & Ireland Distributor



Kingfisher Business Park, London Road, Stroud, Gloucestershire, GL5 2BY, UK

Tel: +44 (0) 1453 733200 sales@et.co.uk www.et.co.uk