

# TR8 Plus Pollutracker

ULTRA-SENSITIVE IN-FIELD CHEMICAL TRACKING

**The Scentroid TR8 Plus Pollutracker is a complete air quality monitor and mobile laboratory. Your own portable chemical lab!**

Users can measure ambient air quality & greenhouse gases due to it using up to 10 sensors and analysers including photo-ionization detectors (PID) sensors, non-dispersive Infrared (NDIR) sensors, electrochemical, and metal oxide sensors.

Each Pollutracker includes a built-in 10" touch- screen interface, on-device data logging, wireless transfer via email, remote (internet-based) firmware updates, built-in sampling pump, simultaneous data analysis of gases, built-in rechargeable battery, on-screen calibration procedure and an external decontamination device.

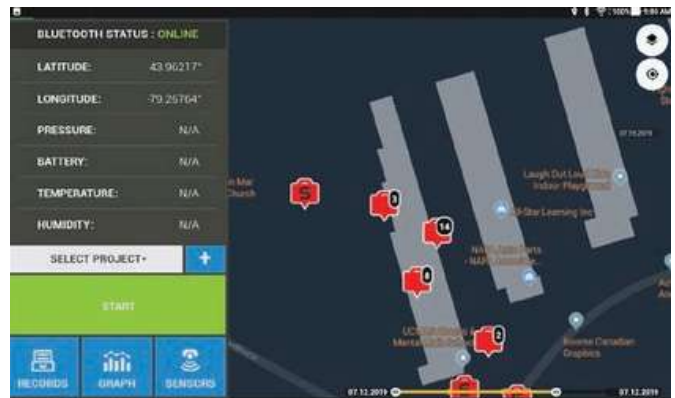


## FLEXIBLE AND COST EFFECTIVE SOLUTION

This instrument can measure all common contaminants including: SO<sub>2</sub>, CO, CO<sub>2</sub>, H<sub>2</sub>S, Methane, VOCs, Ethelene, PM<sub>2.5</sub>, PM<sub>10</sub>, and more. Visit our website at [www.et.co.uk](http://www.et.co.uk) for a full list of sensors available. The chemicals and the range are selectable at the time of ordering.

## TR8+ PROGRAM

Graphic representation and reports are generated with the click of a button with this custom built software.



# Product specifications



## POLLUTION THRESHOLD

Pollutracker measures chemicals close to the detection threshold at parts per billion (ppb) levels



## SAMPLE BAG OR AMBIENT TEST

Measures chemical composition of ambient air or sample stored in a PTFE, Tedlar or Nalophan bags



## INCREASED SAFETY

By providing a constant reading of ambient air, users will receive added protection from over exposure to chemical vapours



## EVERYTHING YOU NEED

The Scentroid Pollutracker includes a sampling pump with adjustable sampling rate, up to 10 chemical sensors, and our software application.



## AUTOMATED DATA LOGGING

Every Pollutracker provides automated continuous chemical, GPS position, temperature, and humidity data logging



## COMPANION EQUIPMENT

TR8 Plus Pollutracker works great with our personal olfactometer SM100i, allowing user to record concentrations as well as detected vapours



## MANAGED SAMPLE DEGRADATION

Laboratories can manage sample degradation due to transportation and storage by analyzing values in-field instead of waiting for the laboratory



## VAST ARRAY OF CAPABILITIES

Measures temperature and humidity, records GPS position of each measurement, and measures directly from ambient air or from a sampling bag. Records continuously via bluetooth.

### Office Location

Kingfisher Business Park  
London Road  
Stroud  
Gloucestershire  
GL5 2BY

Registered in England No. 01726773